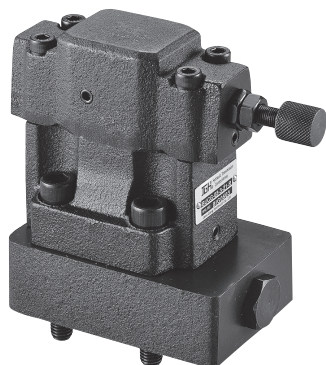
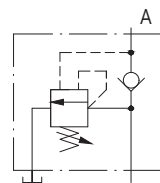


## Unloading Relief Valve



閥類型符號 SYMBOL  
BUCG-※



## 規格說明

## SPECIFICATION

型式 MODEL	最高使用壓力 MAX. OPERATING PRESSURE (kgf/cm <sup>2</sup> )	調壓範圍 PRESSURE ADJ. RANGE kgf/cm <sup>2</sup>	最大流量 MAX. FLOW L/min	重量 WEIGHT kg
BUCG-03-21	250	0 : 7-35 1 : 7-70 2 : 7-140 3 : 7-210	60	7.5
BUCG-06-21			125	11.2

## 型號說明

## HOW TO ORDER

**BUC G - 06 - 3 - 21 - R - 1PN**

閥型式 VALVE TYPE

無代號：標準型 NO CODE : STANDARD TYPE

1PN : 常開 NORMALLY VENTED

1NP : 常閉 ENERGIZED TO VENT

把手方向 DIRECTION OF KNOB

R : 右(P口側標準型) RIGHT (P PORT SIDE STANDARD)

L : 左(T口側) LEFT (T PORT SIDE)

設計編號 DESIGN NUMBER

21 : 低噪音式 LOW NOISE TYPE

調壓範圍 PRESSURE ADJUSTING RANGE

0 : 7-35 kgf/cm<sup>2</sup>      1 : 7-70 kgf/cm<sup>2</sup>

2 : 7-140 kgf/cm<sup>2</sup>      3 : 7-210 kgf/cm<sup>2</sup>

閥規格 VALVE SIZE

03 : 3/8"      06 : 3/4"

安裝型式 MOUNTING

G : 板式安裝 SUB-PLATE MOUNTING

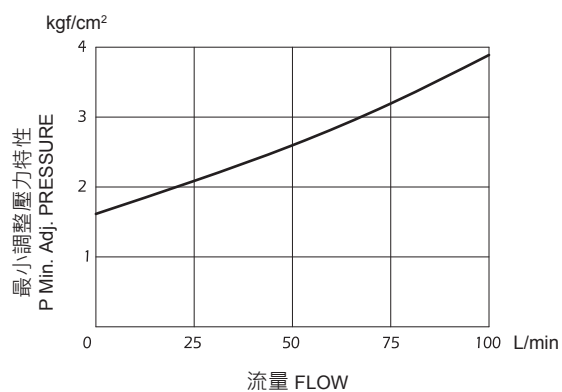
系列編號 SERIES NUMBER

**附屬品 ATTACHMENT**

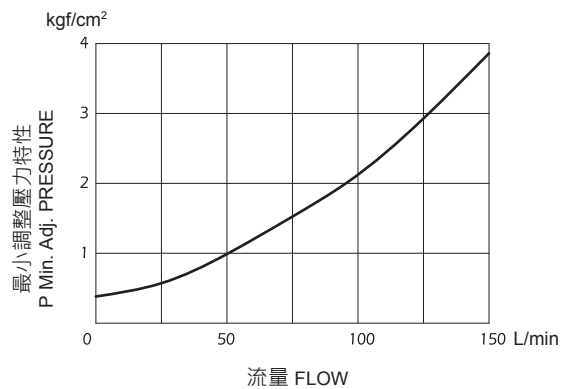
型式 MODEL	安裝螺絲 SOC HOL CAP SCREW	安裝扭矩 MOUNTING TORQUE N·m
<b>BUCG-03-21</b>	M12 x 80L.....4pcs	104~127
<b>BUCG-06-21</b>	M16 x 60L.....2pcs M16 x 100L...4pcs	253~310

流量—卸荷壓力特性 Min. Adj. PRESSURE

● **BUCG-03-※**



● **BUCG-06-※**

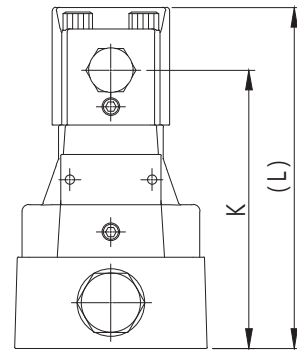
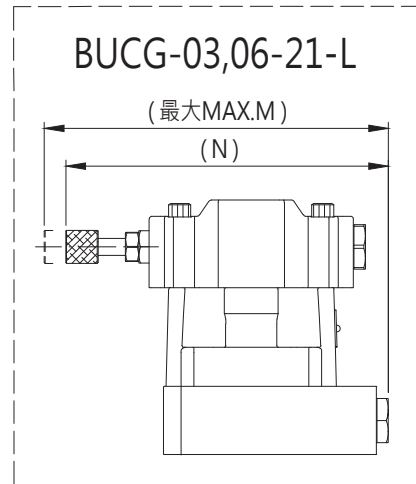
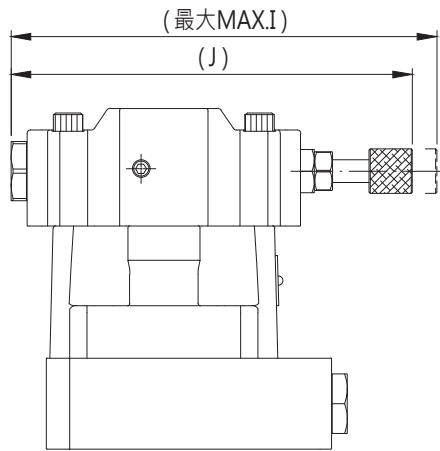
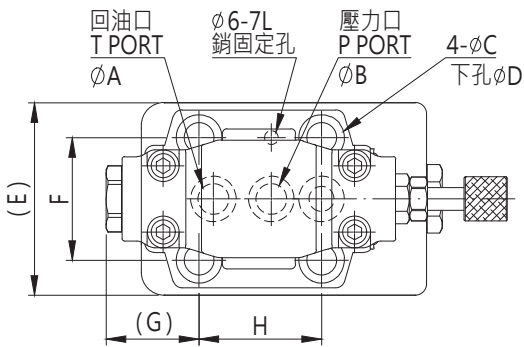
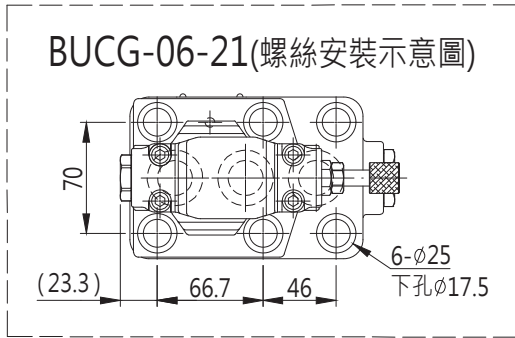


單位 UNIT : mm

**安裝尺寸 INSTALLATION DIMENSIONS**

**BUCG-03,06-21-R**

通用底板尺寸  
 APPLICATIVE  
 SUB-PLATE DIMENSIONS  
**BUCG-03 ( MA - 04 - 1 )**  
**BUCG-06 ( MA - 04 - 2 )**  
 (詳見 E01-03 Page E01-03)



型式 MODEL	A	B	C	D	E	F	G
BUCG-03-21	15	15	20	13	84.5	53.8	40.7
BUCG-06-21	25	25			102		

型式 MODEL	H	I	J	K	L	M	N
BUCG-03-21	53.8	176	160	122	149.5	189.5	173.5
BUCG-06-21		176	160	134	161.5	215	199